

# PHYLUM ARTHROPODA

# Characteristics of Arthropods

- 75 % of animals are arthropods
- Name means “jointed feet”
- Segmented body with appendages
- **Exoskeleton** =
  - External feature that supports and protects an animal’s body

# Classes of Arthropods

- Crustacea
  - Lobsters, crabs, shrimp
- Arachnida
  - Spiders, scorpions, ticks
- Chilopoda
  - Centipedes
- Diplopoda
  - Millipedes
- Insecta
  - Flies, ants, wasps, beetles, butterflies, etc.



# Class Insecta

# Fun Facts

- Insect means “segmented”
- More than 1 million different KNOWN species of insects
- Largest order is the Beetles
  - One in every four animal species is a beetle
- **Ubiquitous** =
  - They can be found almost anywhere

# Good and Bad

- Each kind of insect has a role to play in the world and each affects us in some way
  - Some transmit diseases
    - Mosquitoes
  - Others destroy crops
    - Locusts
  - But many pollinate flowers
    - Bees
  - Others lower pest populations
    - Parasitic wasps kill flies

# Largest insect that ever lived

- Ancient dragonfly called Meganeura
- Wingspan of about 2 feet

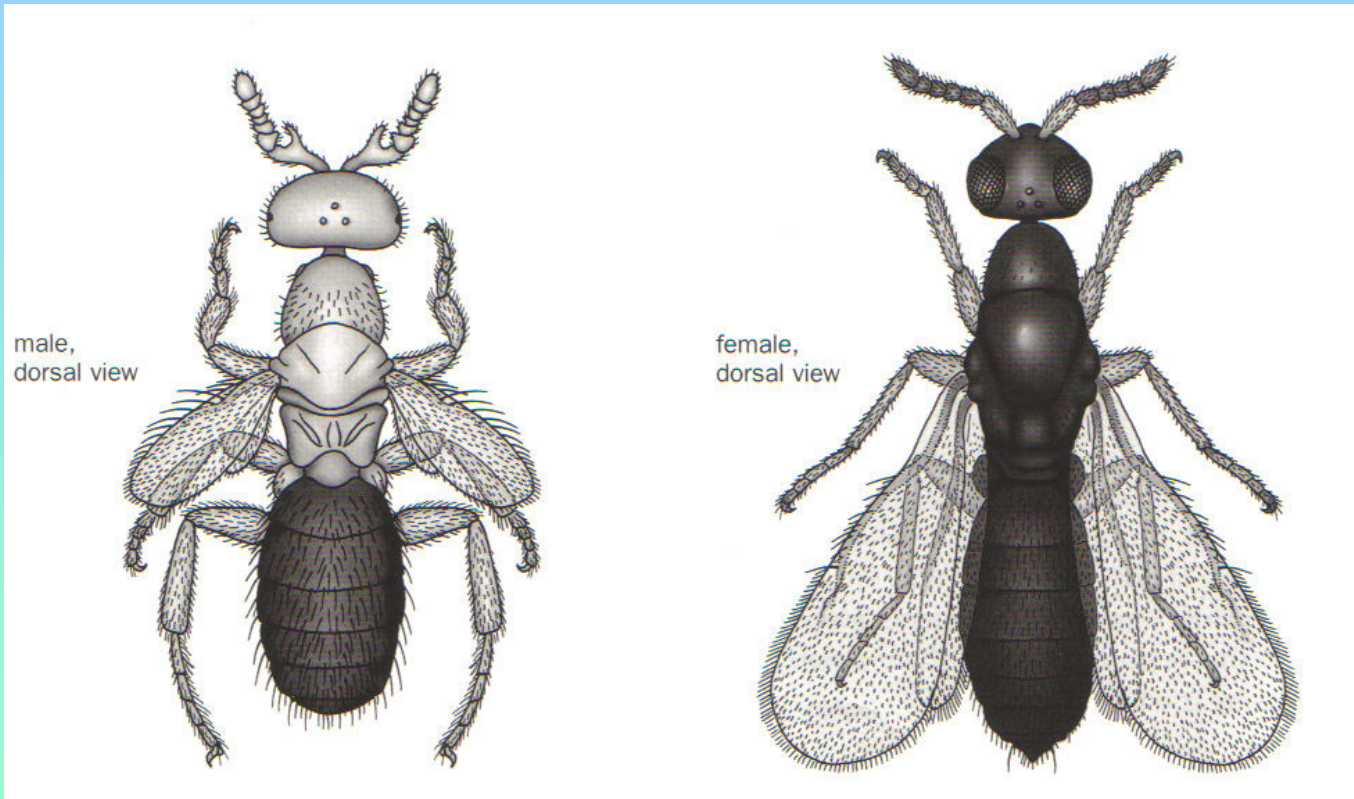


# Anatomy of Insects

- Three part body
  - Head
  - Thorax
  - Abdomen
- 3 pairs of jointed legs
- Compound eyes
- Two antennae
- Mandibles (jaws)
- Often have wings (attached to thorax)



# Adult Parasitic Wasps (*Melittobia digitata*)



ERROR: undefined  
OFFENDING COMMAND: Ecrl5Qq-

STACK: